



## Edgewise type Pressure Gauges

### OUTLINE

This is a micro-pressure gauge to be installed on the control panel and to measure a draft magnitude in a furnace or a flue of a steam boiler in ships and thermal power stations, being capable of improving boiler operation and thus resulting in saving fuel.

### FEATURES

- GE4□ (96 Type) is a micro-pressure gauge for general use, being compact in size, requiring a small space for installation.
  - GE2□ (104 Type) is a micro-pressure gauge with graduations longer by two times than that of the 96 type, making it easier to read.
- According to the direction a watchman views, this gauge can be installed in the central or upper portion of the control panel.
- GE4□ (96 Type) is can be connected, without attaching an accessory, to another gauge.
  - GE2□ (104 Type) is can be connected up to eight gauges.

\* When selecting this micro-pressure gauge, it is requested that this micro-pressure gauge be applied to a pressure measuring range of 30% to 65% of the rated pressure range.  
It is also requested that the appropriate material for the measuring gas contacting portion described in specifications be confirmed.

### SPECIFICATION 1

#### Fluid:

Gas

#### Type [Installation]:

GE45 (EV96 type)  
[Vertical type]



GE46 (EH96 type)  
[Horizontal type]



GE25 (EV104 type)  
[Center installation]



GE26 (ED104 type)  
[Upper installation]



\* 65 type is also available, contact NKS for details.

#### Combination Qty:

1 piece (Single installation) \* Can be combined up to 8 pcs.

#### Connection:

G3/8B

#### Gas contact parts:

##### General use

GE4 Element 316L st.st., Copper alloy,  
Phosphor bronze,

Socket Copper alloy

GE2 Element Phosphor bronze

Socket YBSc3

##### Corrosion-proof use

316 st.st. or 316L st.st. (Depending on range)

#### Pressure range:

0 ~ 0.2 → 0 ~ 50kPa (0 ~ 20 → 0 ~ 5000mmH<sub>2</sub>O)

-10 ~ 0 → -0.4 ~ 5kPa (-1000 ~ 0 → -40 ~ 500mmH<sub>2</sub>O)

\* 20 ~ 100 kPa (Receiver) is also available.

#### Operating temperature:

-5 ~ 40°C

#### Accuracy:

±2 % F.S. or ±3 % F.S.

(Depending on range)

#### Case material finishing:

GE4□ SPCC·Black color

GE2□ Aluminium alloy casting(AC3A)·Black color

#### Electric contact:

Without contact is standard.

In case of GE4□, 1 contact or 2 contacts is available.

#### Illumination:

Without illumination is standard.

In case of GE2□, available with illumination.

#### Accessories (Option):

Three way cock (Brass or st.st.),

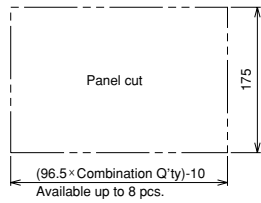
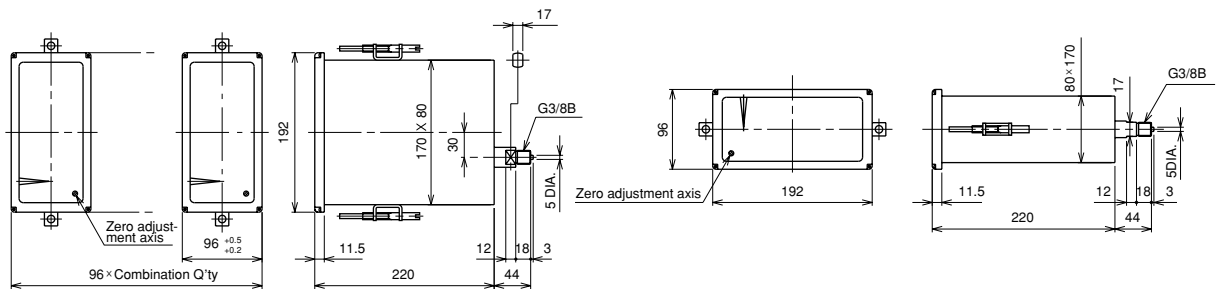
With panel ring (GE4□ only)

## SPECIFICATION 2

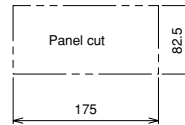
Minimum graduation·Accuracy·Element material:

Pressure range kPa(mmH <sub>2</sub> O)	Minimum graduation kPa(mmH <sub>2</sub> O)	Accuracy ±% F.S.	General use W etted parts (element) material		Corrosion-proof use W etted parts (element) material	
			GE45-46	GE25-26	GE45-46	GE25-26
0 ~ 0.2 (0 ~ 20)	0.01 (1)	3	Chamber Phospher bronze (C5191P)	Chamber Phospher bronze (C5191P)	_____	_____
~ 0.3 (0 ~ 30)	0.01 (1)					
~ 0.4 (0 ~ 40)	0.02 (2)					
~ 0.5 (0 ~ 50)	0.02 (2)					
~ 0.7 (0 ~ 70)	0.02 (2)					
~ 0.8 (0 ~ 80)	0.02 (2)					
~ 1 (0 ~ 100)	0.05 (5)	2	Chamber Copper alloy (C2680R)	Chamber Phospher bronze (C5191P)	Chamber 316Lst.st.	Chamber 316st.st.
~ 2 (0 ~ 200)	0.1 (10)					
~ 3 (0 ~ 300)	0.1 (10)					
~ 4 (0 ~ 400)	0.2 (20)					
~ 5 (0 ~ 500)	0.2 (20)					
~ 7 (0 ~ 700)	0.2 (20)					
~ 10 (0 ~ 1000)	0.5 (50)					
~ 20 (0 ~ 2000)	1 (100)					
~ 30 (0 ~ 3000)	1 (100)					
~ 50 (0 ~ 5000)	2 (200)					
-1 ~ 0 (-100 ~ 0)	0.05 (5)	3	Chamber Copper alloy (C2680R)	Chamber Phospher bronze (C5191P)	Chamber 316Lst.st.	Chamber 316st.st.
-2 ~ 0 (-200 ~ 0)	0.1 (10)					
-3 ~ 0 (-300 ~ 0)	0.1 (10)					
-4 ~ 0 (-400 ~ 0)	0.2 (20)					
-5 ~ 0 (-500 ~ 0)	0.2 (20)					
-7 ~ 0 (-700 ~ 0)	0.2 (20)					
-10 ~ 0 (-1000 ~ 0)	0.5 (50)	2	Chamber 316Lst.st.	Bellows Phospher bronze (C5212R)	Bourdon tube 316st.st.	Bellows 316Lst.st.
-0.1 ~ 0.1 (-10 ~ 10)	0.01 (1)	3	Chamber Phospher bronze (C5191P)	Chamber Phospher bronze (C5191P)	_____	_____
-0.15 ~ 0.15 (-15 ~ 15)	0.01 (1)					
-0.2 ~ 0.3 (-20 ~ 30)	0.02 (2)					
-0.3 ~ 0.4 (-30 ~ 40)	0.02 (2)					
-0.4 ~ 0.6 (-40 ~ 60)	0.05 (5)					
-0.6 ~ 0.4 (-60 ~ 40)	0.05 (5)					
-0.1 ~ 1 (-10 ~ 100)	0.05 (5)					
-0.2 ~ 3 (-20 ~ 300)	0.1 (10)					
-0.4 ~ 5 (-40 ~ 500)	0.2 (20)					
-1 ~ 0.1 (-100 ~ 10)	0.05 (5)					
-1 ~ 1 (-100 ~ 100)	0.1 (10)	2	Chamber Copper alloy (C2680R)	Chamber Phospher bronze (C5191P)	Chamber 316Lst.st.	Chamber 316st.st.
-0.2 ~ 3 (-20 ~ 300)	0.1 (10)					
-0.4 ~ 5 (-40 ~ 500)	0.2 (20)					
-1 ~ 0.1 (-100 ~ 10)	0.05 (5)					
-1 ~ 1 (-100 ~ 100)	0.1 (10)					
-1 ~ 3 (-100 ~ 300)	0.2 (20)					
-2 ~ 1 (-200 ~ 100)	0.1 (10)					
-2 ~ 3 (-200 ~ 300)	0.2 (20)					
-3 ~ 0.2 (-300 ~ 20)	0.1 (10)	2	Chamber Copper alloy (C2801P)	_____	Chamber 316Lst.st.	Bellows 316Lst.st.
-3 ~ 1 (-300 ~ 100)	0.2 (20)					
-5 ~ 0.4 (-500 ~ 40)	0.2 (20)					

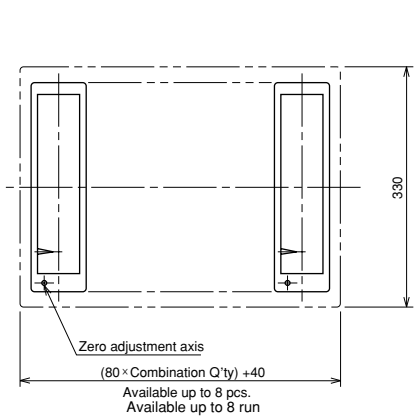
# DIMENSIONS



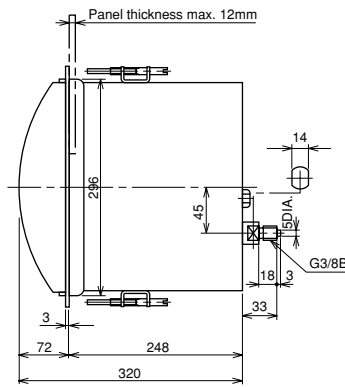
GE45-131



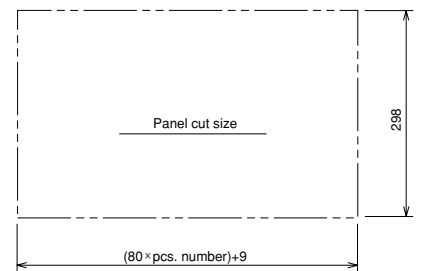
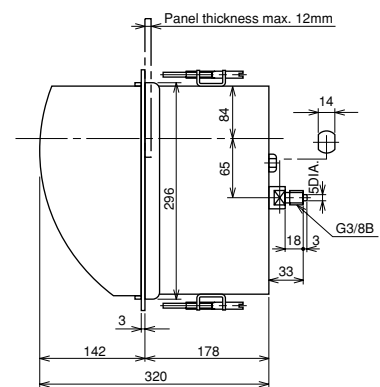
GE46-131



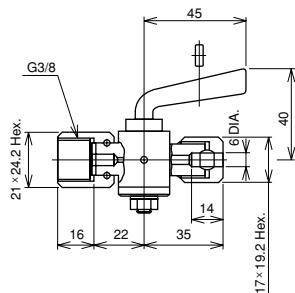
GE25-131



GE26-131



Three way cock: (Option)

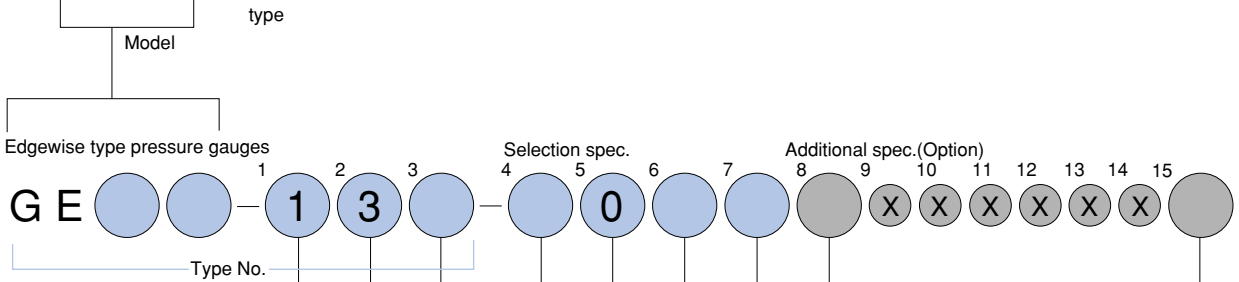
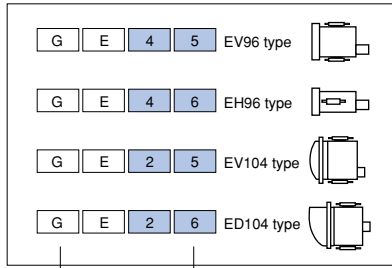


FC20-361

# Type No. constitution

Please specify Type No., each specification and range, when ordering.

Note: For this Model, there is no applicable item for the figures X, but please specify X when ordering.



1 Combination Q'ty  
(Appoint it extra when connect it Run number)  
1 1 Combination Q'ty

2 Connection  
1 G3/8B

3 Gas contact parts  
1 General use  
3 Corrosion-proof use

4 Pressure range (kPa)

	GE45-46		GE25-26	
	General use	Corrosion-proof use	General use	Corrosion-proof use
1	0 ~ 0.2, 0.3, 0.4, 0.5, 0.7	○	—	○
2	0 ~ 0.8	○	○	○
3	0 ~ 1, 2, 3, 4, 5, 7	○	○	○
4	0 ~ 10, 20, 30, 50	○	○	○
5	-1, -2, -3, -4, -5, -7 ~ 0	○	○	○
6	-10 ~ 0	○	○	○
7	-0.1 ~ 0.1, -0.15 ~ 0.15, -0.2 ~ 0.3, -0.3 ~ 0.4	○	—	○
8	-0.4 ~ 0.6, -0.6 ~ 0.4, -0.1 ~ 1, -0.2 ~ 3, -0.4 ~ 5	○	○	○
9	-1 ~ 0.1, -1 ~ 1, -1 ~ 3, -2 ~ 1, -2 ~ 3, -3 ~ 1, -5 ~ 0.4	○	○	○
9	Compound pressure gauge	○	○	○

8 Other additional spec.  
0 Nil  
1 Please specify your requirement  
Three way cock (made of brass),  
three way cock (made of st.st.),  
with panel ring (GE45-46)

7 Illumination  
0 Nil  
1 With illumination  
(GE2□ only)

6 Electric contact In case of GE45-46  
0 Nil  
1 CSI-1 contact H.L (4kPa range over)  
2 CSI-2 contact H.L (7kPa range over)

6 Electric contact In case of GE25-26  
0 Nil

5 Accuracy  
0 Standard  
±2 % F.S. or ±3 % F.S.  
(Depending on range)

15 Document  
0 Nil  
1 Please specify your requirement  
Drawing one sheet, Instruction manual,  
Inspection procedure, Mill sheet,  
Test report

The contents in the catalogue are subject to change without notice.

**NAGANO KEIKI CO., LTD.**



UEDA FACTORY (JQA-0794)  
MARUKO FACTORY (JQA-0789)

HEAD OFFICE & OVERSEAS : 1-30-4, HIGASHIMAGOME OHTA-KU, TOKYO, JAPAN.  
TELEPHONE : 03 (3776) 5328  
SALES DEPT FAX : 03 (3776) 5447  
TELEX : 2468452 NKSTKY J

OVERSEAS PLANTS  
OR AFFILIATES: U.S.A., KOREA, GERMANY  
OVERSEAS SALES NETWORK: AUSTRALIA, HONG KONG, INDONESIA,  
KOREA, MALAYSIA, PHILIPPINES,  
SINGAPORE, TAIWAN, THAILAND, U.S.A.